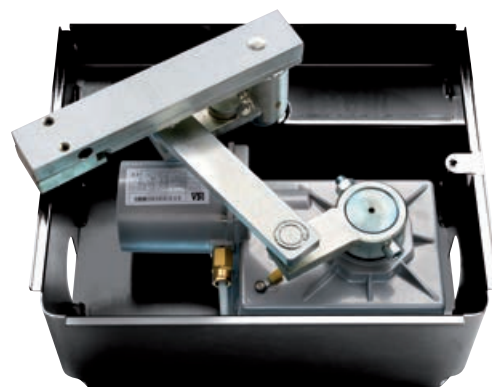


GHOST 200

Electromechanical underground automations for swing gates



NET230N 230V a.c. operators without control board

COD.	Art.			OTHER CHARACTERISTICS
621000	200	• •		Underground operator with connection lever
621040	200CL	• •		Underground operator with connection lever and complete with 8 m of cable
621010	200L	• •		Underground operator with connection lever, slow version
621060	200/EN	• •	•	Underground operator with connection lever and encoder
621070	200/CLEN	• •	•	Underground operator with connection lever, encoder and complete with 8 m of cable

All models have: foundation box and limit switches not included (see on page 72)

Control board to complete the installation: control board cod. 677610 art. NET230N/C (with box)

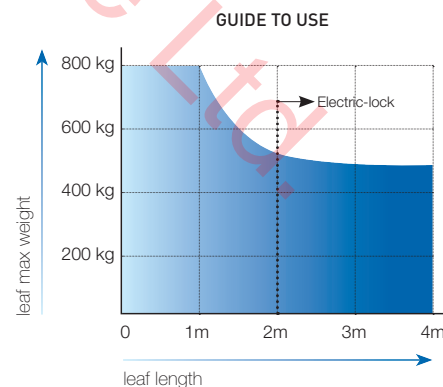
NET24N 24V d.c. operators without control board

COD.	Art.		OTHER CHARACTERISTICS
621020	200/24	• • •	Underground operator with connection lever
621050	200/24CL	• • •	Underground operator with connection lever and complete with 8 m of cable

All models have: foundation box and limit switches not included (see on page 72)

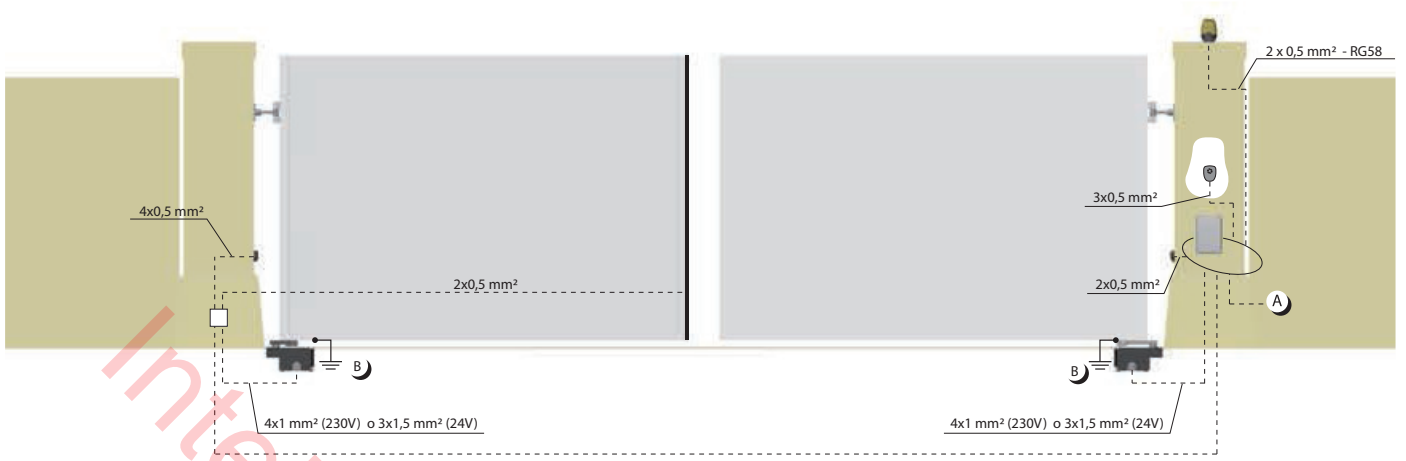
Control board to complete the installation: control board cod. 678261 art. NET24N/C (with box)

TECHNICAL INFO	200 - 200CL 200/EN - 200/CLEN	200L	200/24 200/24CL
Motor power supply (V)	230 AC ± 10 % (50/60 Hz)	230 AC ± 10 % (50/60 Hz)	24 DC
Maximum power absorption (W)	400	330	150
Max thrust (N)	320	300	210
Duty cycle (cycles/hours)	20 - 28 (vers. 200/EN)	18	40
N. max cycles in 24h.	200	200	280
Built-in capacitor (µF)	12,5	12,5	
Operating temperature (°C)	-20 ÷ 50	-20 ÷ 50	-20 ÷ 50
Motor thermal protection (°C)	150	150	/
90° Opening time (s)	17	26	16
Weight with packing (Kg)	14,5	14,5	14
Protection degree	IP67	IP67	IP67

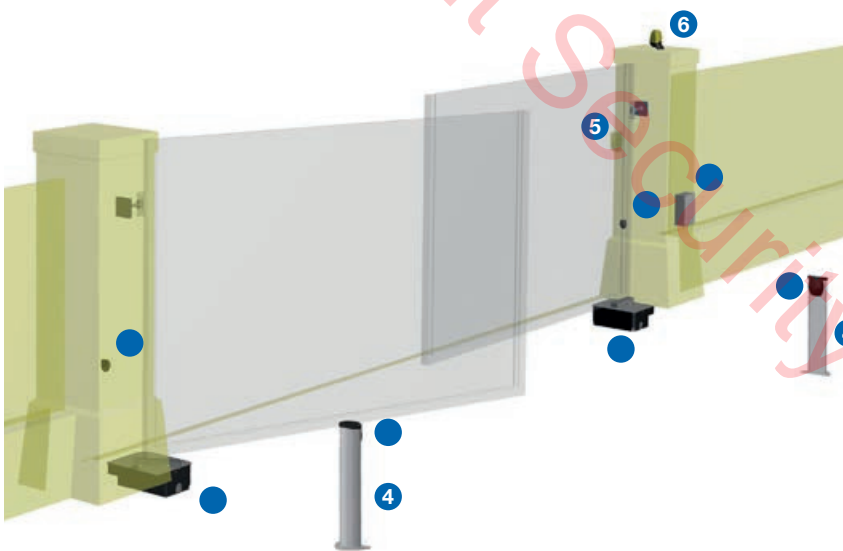


If the leaf length is bigger than 2 meters or if you use reversible models you must install the electric-lock to block the gate in closed position

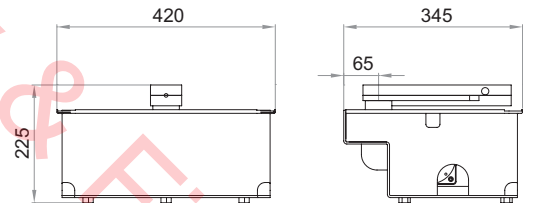
The height and the leaf structure, as well as the presence of strong wind, can cause the reduction of the value of the data contained in table.



EXAMPLE OF A TYPICAL INSTALLATION



DIMENSIONS



 <p>Cod. 629000 Art. 215 Foundation box with cataphoresis treatment complete with gate support and unlocking device</p>	 <p>Cod. 621060 Art. 200/EN Electromechanical underground operator for swing gates</p>	 <p>Cod. 677610 Art. NET230N/C Universal digital control board for 1 or 2 operators, 230V, with or without magnetic encoder (with box)</p>
 <p>Cod. 662030 Art. 104LUX Pair of adjustable (15°) surface mounted photocells</p>	 <p>Cod. 664000 Art. PILLY/60 Pair of aluminium columns for photocells, height 55 cm.</p>	 <p>Cod. 663030 Art. 102LUX Keyswitch with two contacts, flush mounted. Supplied with 2 keys.</p>
 <p>Cod. 661062 Art. LED230AI Led flashing light 230V with built-in antenna 433Mhz</p>	 <p>Cod. 672580 Art. TR2 Remote control Black version art. TR2N also available (page 118)</p>	 <p>Cod. 668010 Art. 127 Warning sign</p>

SPECIFIC ACCESSORIES



Cod. 629000 **Art. 215**
Foundation box with **cataphoresis** treatment complete with gate support and unlocking device



Cod. 629010
Art. 215I
Stainless steel foundation box complete with gate support and unlocking device

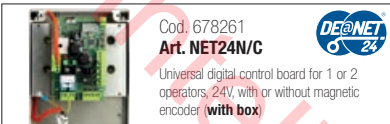


Cod. 629030
Art. 218
Mechanical limit switch



Cod. 629020
Art. 216
Device to be fixed into boxes 215 or 215I to get an opening angle up to 180°

OTHER ACCESSORIES



Cod. 678261
Art. NET24N/C

Universal digital control board for 1 or 2 operators, 24V, with or without magnetic encoder **(with box)**



Cod. 677610
Art. NET230N/C

Universal digital control board for 1 or 2 operators, 230V, with or without magnetic encoder **(with box)**



Cod. 661082
Art. LED24AI
Led flashing light 24V with built-in antenna 433Mhz



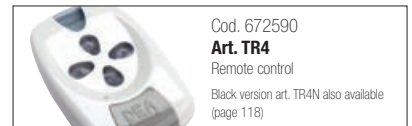
Cod. 661062
Art. LED230AI

Led flashing light 230V with built-in antenna 433Mhz



Cod. 672580
Art. TR2

Remote control
Black version art. TR2N also available (page 118)



Cod. 672590
Art. TR4

Remote control
Black version art. TR4N also available (page 118)



Cod. 662020
Art. 104MINLUX

Pair of surface mounted photocells, Range 20 mt



Cod. 662030
Art. 104LUX

Pair of adjustable (15°) surface mounted photocells



Cod. 662044
Art. LINEAR

Pair of adjustable photocells (180°) with possibility of synchronized operating, Range 20 Mt



Cod. 662043
Art. LINEAR/B

Pair of adjustable photocells (180°) with tx supplied by a LiOn battery, Range 7/15 Mt



Cod. 681060
Art. COVER

Vandal-proof aluminium cover for art. LINEAR and LINEAR/B



Cod. 663060
Art. KYO

Aluminium vandal-proof keyswitch, flush mounted.



Cod. 663280
Art. DIGIRAD

Wireless keypad



Cod. 663270
Art. DIGINET

Hardwired keypad for BUS connections to MASTER devices of range DE@NET (NET24N, NET230N, MASTERNET)



Cod. 664020
Art. PILLY/base

Pair of fixing plates for columns to be cemented.



Cod. 664000
Art. PILLY/60

Pair of aluminium columns for photocells, height 55 cm.



Cod. 664010
Art. PILLY/120

Pair of aluminium columns for photocells, height 100 cm.



Cod. 675510
Art. 251/2

Hardwired 2 channels receiver, surface mounted (complete with box 100F) (433Mhz)



Cod. 629290
Art. BAT

Rechargeable batteries kit for 24V operators, 12V - 1,3Ah, complete with wiring cables



Cod. 681050
Art. Green Energy

Solar power kit complete with art. CHARGER



Cod. 665000
Art. BLINDOS

Safety enclosure to place external unlocking device handle