



Paxton

Net2 Entry



Demo case - Quick start guide

Net2 Entry Demo Case

Quick Start Guide

Net2 Entry is the simplest door entry system on the market. A true plug and play solution, Net2 Entry requires only three components, making it perfect for quick and easy installation.

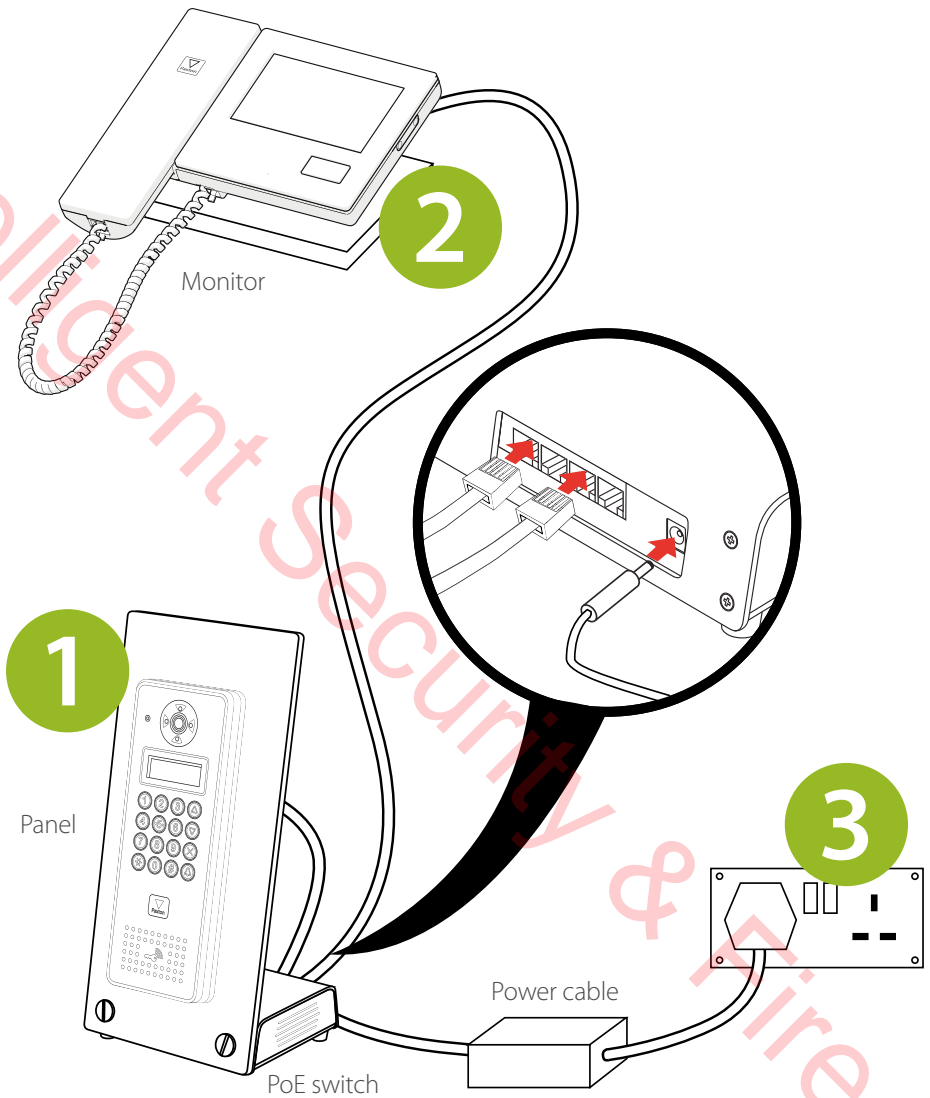
The Net2 Entry demo case is the ideal sales tool to show your customers all that Net2 Entry has to offer:

- Simple security solution
- Intuitive touchscreen monitor
- Elegant and stylish design
- High quality audio and colour video
- Hands free option
- Robust and high security exterior panel
- Infrared camera for low light use

What's in the box?

- Net2 Entry monitor on desk-mount stand
- Net2 Entry panel on display stand, with integrated PoE switch
- Net2 token selection
- Power supply
- 2 x Cat5 cables





Step 1

Plug in Cat5 cable from the panel into the base unit PoE switch




Step 2

Plug in Cat5 cable from the monitor into the base unit PoE

Step 3

Connect mains power cable from base unit PoE switch to wall socket

Now you have wired up the Net2 Entry demo case, what's next?

- To make a call press  on the panel
- Pick up the monitor handset to answer the call
- To answer the call hands free, press  on the touchscreen
- To grant access simply press the button below the touchscreen
- When the button is pressed, the panel will run through a demo sequence, imitating a real life installation. The following messages will appear on the panel display:
 - Door unlocked
 - Door open
 - Door closed
 - Door locked
- For additional help, press  on the touchscreen monitor, or follow the links to instructions below

Full instructions and specifications can be found on our website. Please visit the following links:

<http://paxton.info/1872> - Net2 Entry control unit

<http://paxton.info/1873> - Net2 Entry panel

<http://paxton.info/1874> - Net2 Entry monitor

